

LAB 2 Study Aid - Brain

Mnemonics:

- Ventricle** = open/'empty' space (filled with CSF)
 - <https://www.youtube.com/watch?v=0jSWjOBIIUI>
 - <https://www.youtube.com/watch?v=Jcf273U0ktc>
- 4th ventricle** = backwards 4
- Insular lobe** = 'insulated' by other lobes (hidden from view)
- Parietal lobe**: Parents pat on top of head
- Occipital lobe**: "got eyes on the back of my head"
- Sulci** = 'sulk' (a groove)
- Commissural fibers** = cross at corpus callosum (both start with C)
- Hypothalamus** = looks like a W (looks like an H if you squish it)
- Optic chiasm** = X shaped, Greek letter Chi (X) is an x (think *Chi square* test from statistics)
- Regarding cranial nerves**: **Tract** = goes to the brain | **Nerve** = comes from sensory organ
- Colliculi**
 - Superior** = initiate visual reflexes (**eyes are above the ears**)
 - Inferior** = initiate auditory reflexes (ears are **below** the eyes)
- Cerebral Peduncle** vs. **Cerebellar peduncle** == look where each type of tract is heading
- CRANIAL NERVE** mnemonic:
 - Oh once one takes the anatomy final, very good vacations sound heavenly**
 - (**o**lfactory, **o**ptic, **o**culomotor, **t**rochlear, **t**rigeminal, **a**bducens, **f**acial, **v**estibulocochlear, **g**lossopharyngeal, **v**agus, **s**pinal accessory, **h**ypoglossal)
- NERVE CLASSIFICATION mnemonic (**S**ensory, **M**otor, or **B**oth sensory+motor):
 - Some say marry money, but my brother says big business makes money**
 - Olfactory (S), optic (S), oculomotor (M), trochlear (M), trigeminal (B), abducens (M), facial (B), vestibulocochlear (S), glossopharyngeal (B), vagus (B), spinal accessory (M), hypoglossal (M)

Understanding the words

Epi- = above

Hypo- = below (think hypothermia)

Inter- = between (get between ppl when you interrupt)

Septum pellucidum = "transparent wall"

Peduncle -> little foot (*Ped* = foot; think pedicure)

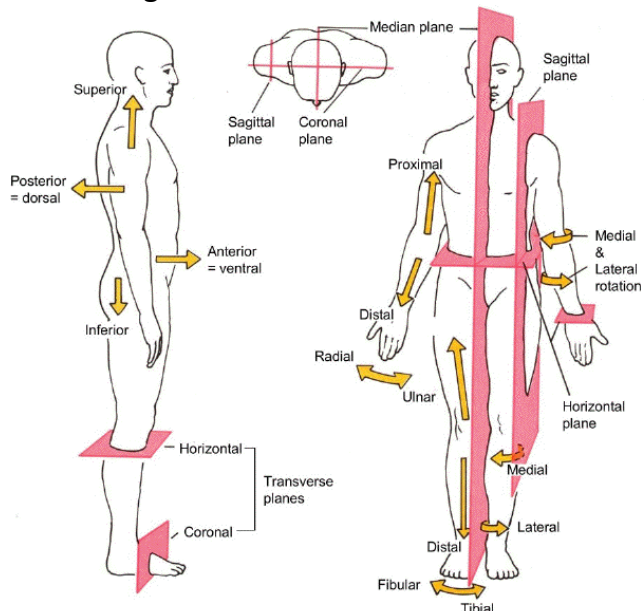
Mater = mother (think: protects)

Dura = tough, pia=delicate, (arachnoid b/c web-like)

Notes

- Basal Nuclei** = clusters of grey matter that are located deeper than white matter of Cerebrum
- Epithalamus** = brain structure early in development that develops into the **Pineal Body** and the **Choroid Plexus**
- CAN'T see on the models (could still show up as pictures): basal nuclei, meninges, substantia nigra, red nuclei

Useful Diagram of Anatomical terms:



Tract = goes to the brain
Nerve = comes from sensory organ
(Think optic nerve dangling from eyeball in horror film)

